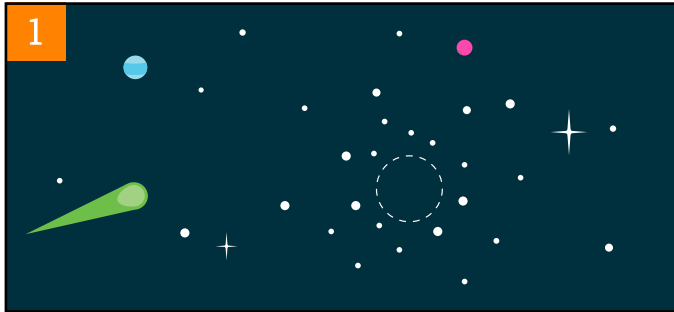


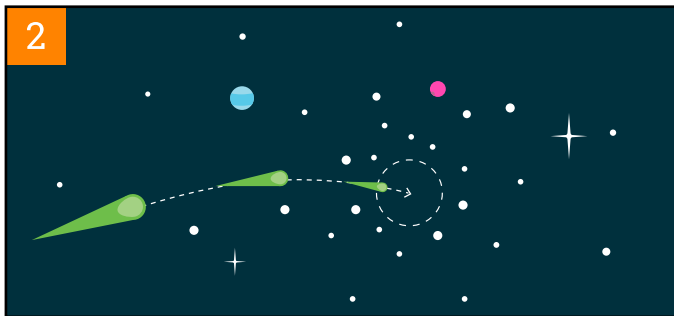
Do you have a black hole in your IT strategy when it comes to sharing content?

Black holes are some of the most powerful and mysterious objects in the universe and yet are completely invisible. So, *how do you know one is there if you can't see it?*

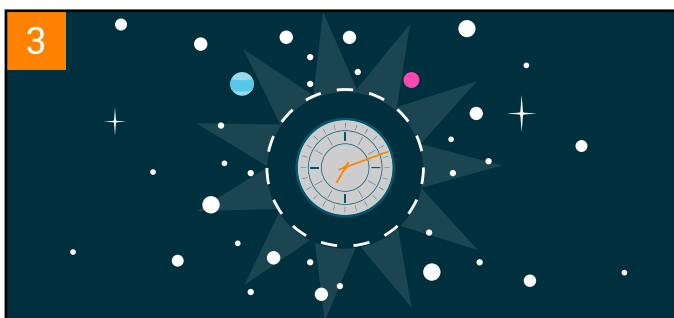
How to identify a real black hole



You observe objects gravitating toward one area.

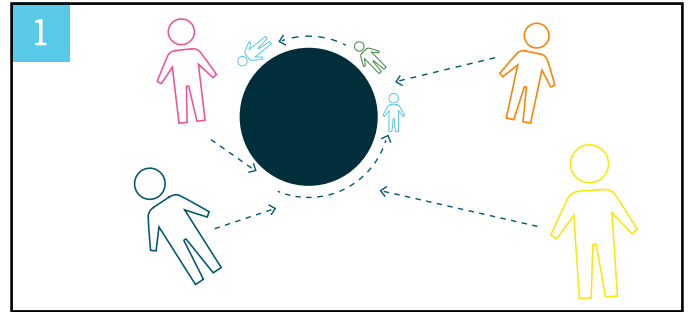


When objects go into the black hole, you lose sight of them and they never come back out.



If you get too close, you will experience an event horizon, where time appears to stand still.

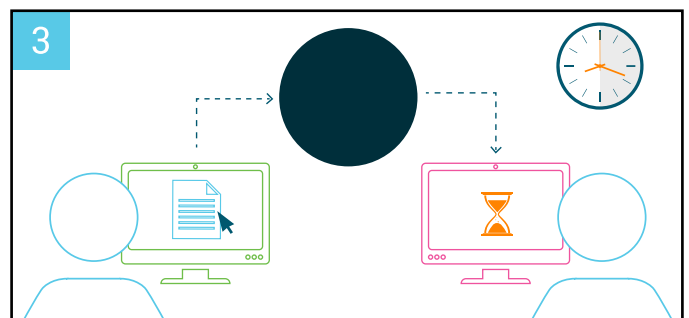
How to identify a black hole in your IT strategy



You observe employees gravitating toward unsecure cloud-based sharing tools you don't want them to use.



You witness your critical, sensitive or proprietary information going into these tools and you lose sight of it. When your employees leave and retain access to that information, you realize it's never coming back.



If you take a closer look, you may notice employees manually copying and pasting files from your corporate systems into these tools, causing your processes to come to a standstill.

ShareBase by Hyland is a cloud-based file-sharing tool designed to be an “anti-black hole” for your enterprise. Learn more at ShareBase.com »